

## MOON PHASES WORKSHEET

If Storytime Issue 39's poem – *The Moon* by Oliver Herford – has inspired your child's curiosity about the moon, use this worksheet to show the different phases of the moon and explain why it gets fatter and thinner.

## MOON PHASES EXPLAINED



1

It might look like the moon is changing size or shape, but it isn't. As it orbits (moves around) our planet, the sun's light hits the moon at a different angle, so the moon we can see appears to get larger and smaller.

2

Though the moon looks bright in the night sky it doesn't make any light of its own. The light you see is actually sunlight reflecting off the moon.

3

It takes 29.5 days for the moon to go through its phases (see page 2). Once it has finished, it begins again.

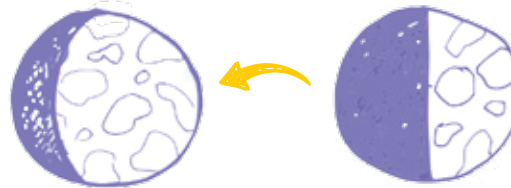
## THE 8 PHASES OF THE MOON

The moon passes through eight different phases. Here's how it looks in the sky:

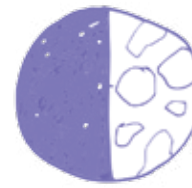
### TOP TIP

For a fun way to learn about moon phases, recreate the images below using Oreo cookies.

**4. WAXING GIBBOUS:** At this stage, more than half of the moon is lit up by the sun, but it's not yet a full moon.



**3. FIRST QUARTER:** As the moon continues to orbit Earth, the light of the sun on the moon is slowly increasing. It now illuminates half the moon.



**5. FULL MOON:** The side of the moon facing Earth is also facing the sun. It looks like the whole moon is illuminated, but the side we can't see is dark.



**2. WAXING CRESCENT:** The moon moves round a bit. 'Waxing' means to gradually increase. From Earth, we only see a bit of where the sun has illuminated the moon, making it look like a crescent shape.



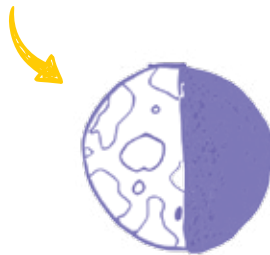
**6. WANING GIBBOUS:** 'Waning' means gradually decreasing. Now the moon isn't fully illuminated again.



**1. NEW MOON:** This is when the moon is in front of the sun. The side facing earth is dark, so we can't see it.



**7. LAST QUARTER:** This time, the opposite half of the moon is illuminated. That's because the moon has moved round and is on the opposite side of the Earth to where it was in the First Quarter.

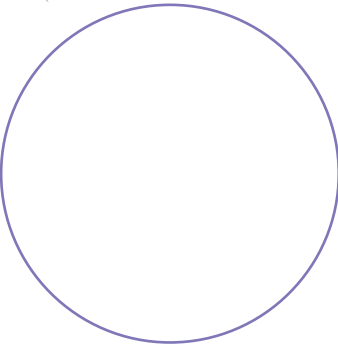
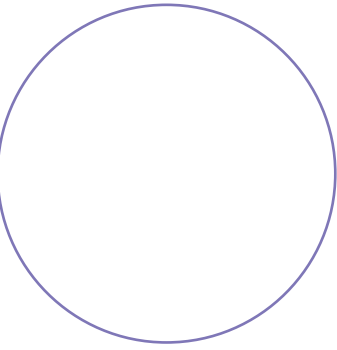
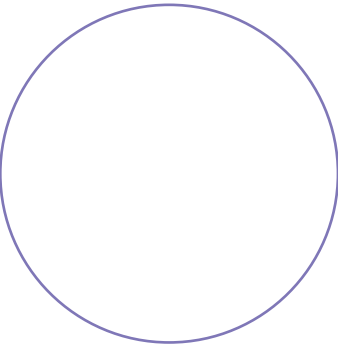
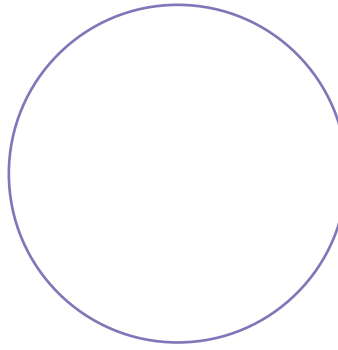
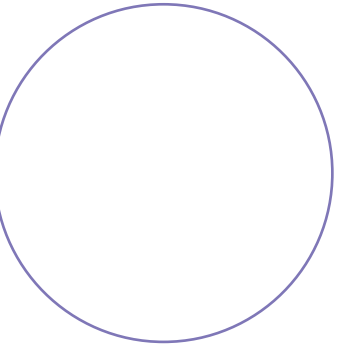
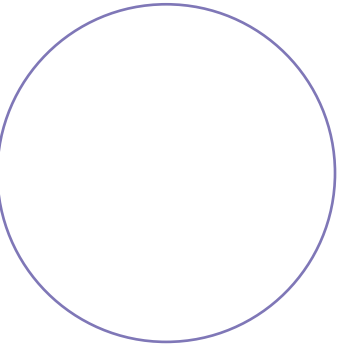
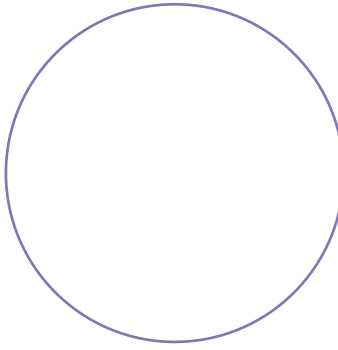


**8. WANING CRESCENT:** As the moon completes its orbit, it reflects less light from the sun. Soon we won't be able to see it and there will be a New Moon.



**BE A MOON  
DETECTIVE!**

What phase is the moon at? Spot the moon out of your bedroom window and colour it in for the next few days. See how it changes.

 DATE _____	 DATE _____	 DATE _____	 DATE _____
 DATE _____	 DATE _____	 DATE _____	



**MOON  
FACT**  
The moon travels round  
Earth at 2,288 miles  
(3,683 km) per hour!